

[CP109 Black]  
Retort pouch ink



[White/yellow ink]  
Electric cable ink



We at Kishu Giken Kogyo are very proud of our feature-rich inks, and have prepared some videos introducing them in more detail. They can be accessed by scanning the QR codes placed above with a smartphone.

**YouTube**

**CAUTION**

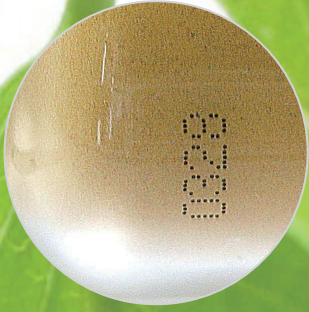
- Information included in this catalog is based on representative experimental values and investigation, and no guarantees are made regarding its content.
- Before use, please test within your company to see if the product is suitable for your objectives and to check its safety.
- Please dispose of all products listed in this catalog according to relevant laws.
- Before use, check the safety data sheet (SDS) for safety and usage information.
- We reserve the right to change the content of this catalog based on new findings and knowledge without notice.

**KGK KGK Co., Ltd.**  
<http://www.kishugiken.co.jp/ew/>

- |                           |   |                  |                  |
|---------------------------|---|------------------|------------------|
| ■ Sendai Sales Office     | 36-1, Koriyama Shinbashi Minami, Taihaku-ku, Sendai-shi | TEL 022-748-1556 | FAX 022-247-1988 |
| ■ Tokyo Sales Office      | 3-41-13, Mukojima, Sumida-ku, Tokyo                     | TEL 03-3624-2111 | FAX 03-5608-7277 |
| ■ Yokohama Sales Office   | 3-20-12, Shinyokohama, Kohoku-ku, Yokohama-shi          | TEL 045-478-0696 | FAX 045-473-3140 |
| ■ Kumagaya Sales Office   | 852, Kamino, Kumagaya-shi, Saitama                      | TEL 048-520-3110 | FAX 048-527-8141 |
| ■ Shizuoka Sales Office   | 2-1-10, Nishinakahara, Suruga-ku, Shizuoka-shi          | TEL 054-284-3526 | FAX 054-284-3559 |
| ■ Nagoya Sales Office     | 3-96, Issha, Meito-ku, Nagoya-shi                       | TEL 052-704-0505 | FAX 052-709-1220 |
| ■ Osaka Sales Office      | 10-35, Hiroshiba-cho, Suita-shi, Osaka                  | TEL 06-6330-6651 | FAX 06-6378-1203 |
| ■ Kobe Sales Office       | 4-24-19, Manabigaoka, Tarumi-ku, Kobe-shi               | TEL 078-787-7477 | FAX 078-783-1050 |
| ■ Hiroshima Sales Office  | 2-17-2, Nakahiro-machi, Nishi-ku, Hiroshima-shi         | TEL 082-532-3300 | FAX 082-231-6800 |
| ■ Fukuoka Sales Office    | 1-3-14, Yutaka, Hakata-ku, Fukuoka-shi                  | TEL 092-482-6303 | FAX 092-477-3504 |
| ■ Kainan Technical Center | 1-1, Minami Akasaka, Kainan-shi, Wakayama               | TEL 073-483-3141 | FAX 073-484-2084 |
| ■ Headquarters            | 466, Nunohiki, Wakayama-shi                             | TEL 073-445-6610 | FAX 073-448-2005 |

# CCS Series Ink Lineup

## VARIATION OF THE INK



# CCS Series Ink Lineup

Highly recommended  Printing OK  Printing Not OK

Kishu Giken Kogyo develops ink for printing on a wide variety of materials, such as cardboard, metal, plastic, ceramics, and food products. We continue to develop products that meet the needs of the market, such as high adhesion ink, edible ink, and heat-resistant ink. These products, as well as our commercial inkjet printers, are shipped from our own warehouse.



Product Name	Major Use	Color	Dye/Pigment	Prime Solvent	Compatible Material (Substrate)	Light Fastness (Period/Condition)	Best for	Strengths	Printing Example
CN1 Black	Standard ink	Black	Dye	MEK	Metal, Paper, Wood, Glass, PS, ABS, Rigid PVC, PE, Ceramics, Soft PVC	Around one year	One year	Applicable to a wide variety of materials.	
CN101 Black	Standard ink	Black	Dye	MEK	Metal, Paper, Wood, Glass, PS, ABS, Rigid PVC, PE, Ceramics, Soft PVC	Around one year	One year	Applicable to a wide variety of materials. Improved adhesion and coating strength over CN1 Black.	
CN1 Red	Red ink	Red	Dye	MEK	Metal, Paper, Wood, Glass, PS, ABS, Rigid PVC, PE, Ceramics, Soft PVC	Around one year	One year	Applicable to a wide variety of materials.	
CN505 Black	PP ink	Black	Dye	MEK	Metal, Paper, Wood, Glass, PS, ABS, Rigid PVC, PE, Ceramics, Soft PVC	Around one year	One year	Adheres well to PP (polypropylene).	
CN7 Red	Edible ink	Red	Dye	Ethanol	Fruit	-	Three months	Composed solely of food additives that have been approved by the Ministry of Health, Labour and Welfare. Extremely safe, and can be printed directly on food products.	
CN9 Fluorescent	Stealth ink	Colorless	Dye	MEK	Metal, Paper, Wood, Glass, PS, ABS, Rigid PVC, PE, Ceramics, Soft PVC	-	Six months	For use in concealed printing. While normally invisible, this ink will appear blue under a black light.	
CN12 Black	Electric cable ink	Black	Dye	MEK	Metal, Paper, Wood, Glass, PS, ABS, Rigid PVC, PE, Ceramics, Soft PVC	-	Six months	Adheres well to electric cables (soft polyvinyl chloride). Does not blur or offset easily.	
CN103 Black	Alcohol resistant ink	Black	Dye	MEK	Metal, Paper, Wood, Glass, PS, ABS, Rigid PVC, PE, Ceramics, Soft PVC	Around one year	One year	Strong against alcohol wiping and dipping.	
CN104H Black	Retort pouch ink	Black	Dye	MEK	Metal, Paper, Wood, Glass, PS, ABS, Rigid PVC, PE, Ceramics, Soft PVC	-	Six months	Will not peel even if subjected to heat sterilization (100°C - 120°C).	
CN105A Green	Edible ink (for eggs)	Green	Dye	Water	Eggs	-	*1	Ink for eggs. Printing will not fade even if they are boiled. Composed solely of food additives that have been approved by the Ministry of Health, Labour and Welfare. Good visibility on both brown and white eggs.	
CN105SL Green	Edible ink (for eggs)	Green	Dye	Water	Eggs	-	*1	Ink for eggs. Printing will not fade even if they are boiled. Composed solely of food additives that have been approved by the Ministry of Health, Labour and Welfare. Good visibility on both brown and white eggs.	
CN300 Black	PE ink	Black	Dye	MEK	Metal, Paper, Wood, Glass, PS, ABS, Rigid PVC, PE, Ceramics, Soft PVC	-	One year	Ink with improved adhesion to polyethylene.	
CN301 Black	Oil resistant ink	Black	Dye	MEK	Metal, Paper, Wood, Glass, PS, ABS, Rigid PVC, PE, Ceramics, Soft PVC	-	Six months	Ink with improved oil resistance.	
CN302 Black	Ink for soaking into PE	Black	Dye	MEK	Metal, Paper, Wood, Glass, PS, ABS, Rigid PVC, PE, Ceramics, Soft PVC	-	Six months	The ink is soaked in a PE substrate, so printing remains even if wiped with solvent. Suitable for printing tamper-proof marking.	
CN303 Black	Alcohol ink	Black	Dye	Ethanol	Metal, Paper, Wood, Glass, PS, ABS, Rigid PVC, PE, Ceramics, Soft PVC	-	Six months	Does not use MEK, so there is no foul odor. Not subject to the Ordinance on the Prevention of Organic Solvent Poisoning.	

Product Name	Major Use	Color	Dye/Pigment	Prime Solvent	Compatible Material (Substrate)	Light Fastness (Period/Condition)	Best for	Strengths	Printing Example
CN306A Black	Ink for metal	Black	Dye	MEK	Metal, Paper, Wood, Glass, PS, ABS, Rigid PVC, PE, Ceramics, Soft PVC	-	Six months	Adheres well to metal.	
CN307A Black	Ink for glass	Black	Dye	MEK	Metal, Paper, Wood, Glass, PS, ABS, Rigid PVC, PE, Ceramics, Soft PVC	-	Six months	Adheres well to glass.	
CP1 Yellow	Yellow ink	Yellow	Pigment	MEK	Metal, Paper, Wood, Glass, PS, ABS, Rigid PVC, PE, Ceramics, Soft PVC	Around one year	Six months	Allows for printing with a high level of hiding ability on dark substrates. * This ink is for pigment bodies. We also offer CP107 Yellow ink for dye bodies.	
CP109 Black	Retort pouch ink	Black	Pigment	MEK	Metal, Paper, Wood, Glass, PS, ABS, Rigid PVC, PE, Ceramics, Soft PVC	Around one year	Six months	Pigment ink for retort pouch food products. Will not peel even if subjected to heat sterilization (120°C). Ink will not penetrate or leave a copy on materials easily.	
CP2 Black	Alcohol ink	Black	Pigment	Ethanol	Metal, Paper, Wood, Glass, PS, ABS, Rigid PVC, PE, Ceramics, Soft PVC	Around one year	Six months	Does not use MEK, so there is no foul odor.	
CP209 Black	Water-based ink	Black	Pigment	Water	Metal, Paper, Wood, Glass, PS, ABS, Rigid PVC, PE, Ceramics, Soft PVC	Around one year	Six months	Does not have a flash point, so it is not a hazardous material under the Fire Service Act. Not subject to the Ordinance on the Prevention of Organic Solvent Poisoning. After drying, the ink can be washed with a weak alkaline water solution.	
CP602 Black	Bincholan edible ink	Black	Pigment	Ethanol	Fruit	-	*1	Composed solely of food additives that have been approved by the Ministry of Health, Labour and Welfare. Extremely safe, and can be printed directly on food products.	
CP7 Black	Electric cable ink	Black	Pigment	MEK	Metal, Paper, Wood, Glass, PS, ABS, Rigid PVC, PE, Ceramics, Soft PVC	Around one year	Six months	For use on electric cables (soft PVC). Improved offset over CN12 Black and CP3 Black. Reduced adhesion compared to CN12 Black.	
CP8 Blue	Blue ink	Blue	Pigment	MEK	Metal, Paper, Wood, Glass, PS, ABS, Rigid PVC, PE, Ceramics, Soft PVC	Around one year	Six months	Blue ink. Applicable to a wide variety of substrates. Will not peel even if subjected to heat sterilization (120°C).	
CP105 White	White ink (general purpose)	White	Pigment	MEK	Metal, Paper, Wood, Glass, PS, ABS, Rigid PVC, PE, Ceramics, Soft PVC	Around one year	Six months	Suitable for general purpose substrates.	
CP200 White	White ink (for electric cables)	White	Pigment	MEK	Metal, Paper, Wood, Glass, PS, ABS, Rigid PVC, PE, Ceramics, Soft PVC	Around one year	Six months	Suitable for PVC electric cable, etc.	
CP205 White	Edible ink	White	Pigment	Ethanol	Fruit	-	Six months (three months after opening)	Composed solely of food additives that have been approved by the Ministry of Health, Labour and Welfare. Extremely safe, and can be printed directly on food products.	
CP211 White	Ultra high concentration white ink (general purpose)	White	Pigment	MEK	Metal, Paper, Wood, Glass, PS, ABS, Rigid PVC, PE, Ceramics, Soft PVC	Around one year	Six months	Halogen-free ink with a richer white color than CP105 White. Suitable for general purpose substrates.	
CP204 White	White ink (halogen-free)	White	Pigment	MEK	Metal, Paper, Wood, Glass, PS, ABS, Rigid PVC, PE, Ceramics, Soft PVC	Around one year	Six months	Halogen-free Thermosetting property white ink. Hardens at 200°C for 30 minutes.	

\*1 Please start to use within 90 days of the manufacture date and use up in 300 hours of printer operation or within six months of the manufacture date, whichever is shorter.