

KGK JET CCS3500/3300

We propose the most suitable ink for you from our wide variety of ink



catalog No.7261E

Effective measures to comply with the Industrial Safety and Health Act

- High speed printing (up to 3666 characters/sec. (depending on nozzle and ink type))
- IP65, CE, RoHS compliant
- Simultaneous control (up to 16 units)



High-end model **CCS3500**



Standard model **CCS3300**



Twist Cartridge

The twist cartridge keeps hands and equipment clean when refilling ink and solvent, and greatly reduces solvent odor, preventing exposure. With a mechanism to prevent incorrect insertion of ink and solvent.



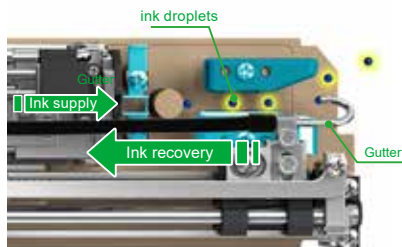
Simultaneous control (up to 16 units)

Supports multi-printhead with slave function. Simultaneous control of up to 16 slave units with a master unit. (However, some functions are limited)



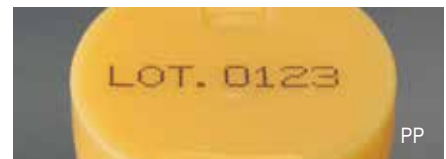
Removable touch panel

Features a removable 10.4-inch full-color touch panel. The screen can be removed for remote control. Maintenance operations can be performed while viewing the maintenance screen nearby. (only CCS3500)



Nozzle capping mechanism

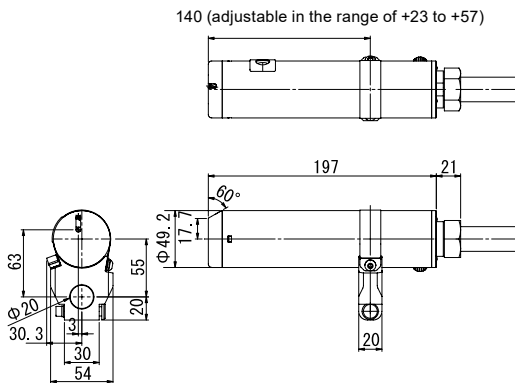
At the end of operation, the ink collection port called gutter automatically moves inside the printhead to seal the nozzle. Prevents ink from solidifying and eliminates the need for nozzle cleaning at the end of the process.



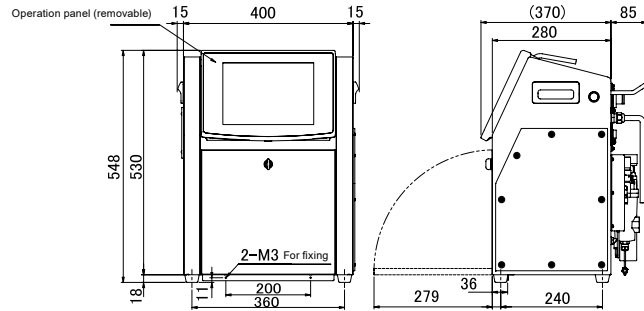
Model	CCS3500	CCS3300
Printing method	Continuous type (charge control method)	
Compatible inks	Dye ink, some pigment ink included	
Dust and water resistance	IP65	IP54
RoHs	Compliant	
Screen Size	10.4" color LCD / touch panel	5.7" color LCD / touch panel
Supported Nozzles	40 μm / 50 μm / 60μm	
Character height	0.8 – 5mm (40μm nozzle), 1 – 10 mm (50μm nozzle), 2 – 10 mm (60μm nozzle)	
Max printing speed [characters/sec.] (5 x 5 dot font, character spacing 1)	2233 ~ 3666 (Depends on nozzle and ink type)	
Character type	Alphabet (upper/lower case), numerals, hiragana, katakana, kanji (JIS 1 and 2), user characters	
Number of print lines and dot configuration example (vertical x horizontal)	[1 – 6 lines] 5 x 5, 5 x N ※ Up to 5 lines (CCS3300)	[1 line] 24 x 18, 24 x 24, 32 x 24 ※ 1, 32 x 32 ※ 1
Number of registered message characters	Up to 4,096 characters	
Number of messages registered	Max. 999 messages	
Date and time (best-before date) printing function	Calendar year, year number, date, day of the week, time (12/24 time system), yearly date, yearly week number, Upper, middle, and end of month (variable period setting), AM/PM, shift code, character allocation function (year, month, day, hour, minute, second, day of the week) to another character of up to 4 to 15 digits	
Numbering function	Max. 10 digits, optional initial setting, up/down, digit up (1 count can be set in the range of 1 to 9999 work numbers), zero suppress function (replace or prepend zeros of upper digits with spaces), numbering character allocation function (allocatable to characters other than numbers), base number setting (2 to 36 base number), divisible (insert any character between numbers)	
Distance printing function	Up to 10 digits, splittable (insert any character between numbers)	
Barcode printing function	ITF, Code39, NW7, JAN Code128	
2D code printing function	QR code, data matrix	
Kana-Kanji conversion	Yes	
External connection	I/O, signal lights, RS-232C, LAN, encoder, UPS, USB memory	
Data input	Touch panel, RS-232C communication, Ethernet	
Communication function	RS-232C 1CH max. 115200 bps, Ethernet	
Printhead cable length	3.5m	
Multi-control	Up to 16 slave units can be controlled by one master unit. [Controllable functions] Run/Stop, Power Off, System Clock Setting, Message Selection, Print Content Editing, Numbering Current Value Setting	
Dry air source	Applicable tube outline: φ6mm or 8mm, air source pressure: 0.8Mpa or less (air ventilation set included in the main unit) Air flow rate: 10L / Min or less (pigment machine with stirrer * is 70L / Min or less)	
Installation area (W x D x H)	Main unit: 400W x 307D x 548H (excluding protruding parts) Printhead: φ49.2 mm x 197 mm	Main unit: 400W x 280D x 532H (excluding protruding parts) Printhead: φ49.2 mm x 197 mm
Operating environment (temperature, humidity)	0 - 40°C (depending on ink type), 10 - 85% (with no condensation)	
Power supply	AC90 - 264V (47-63Hz) , 80W	
Weight	25Kg	
Grounding	Class D installation	

※ 1 Applicable to CCS3500 only

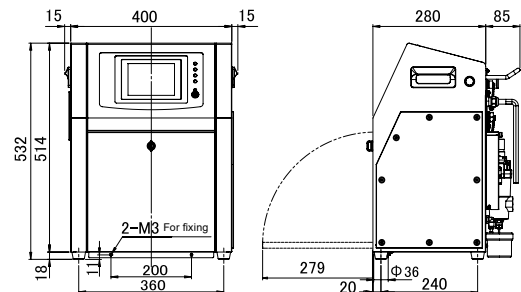
▼ Printhead (CCS3500/3300)



▼ Main unit (CCS3500)



▼ Main unit (CCS3300)



Please note that product specifications are subject to change without notice.

Note: A specified space is required around the main unit installation location. Please contact us for more information.